

"RESIDENCE LES PASTORALES"

3, rue du maréchal Leclerc
28600 LUISANT

SNC LUISANT
93 avenue Henri Fréville
35200 RENNES

Bâtiment A

Logement A209

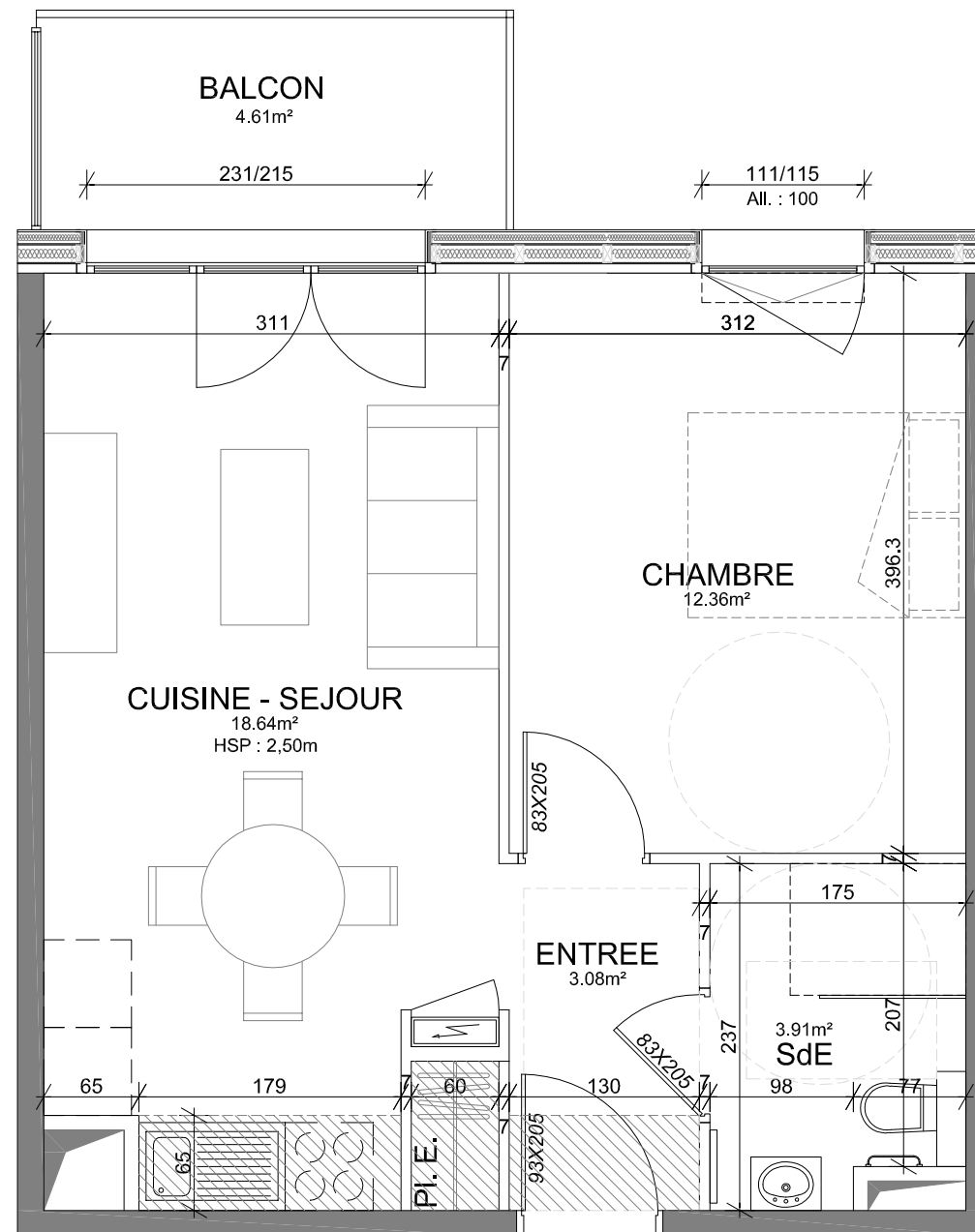
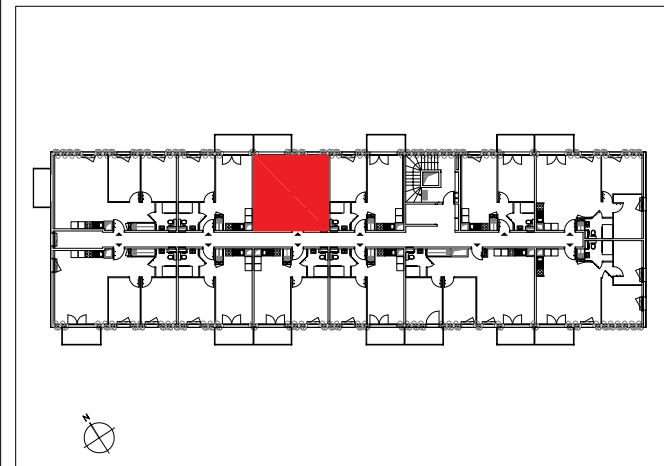
NIVEAU 2

T2

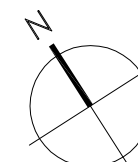
TABLEAU DES SURFACES HABITABLES

SEJOUR + CUISINE	18.64m ²
CHAMBRE	12.36m ²
SDE + WC	3.91m ²
ENTREE + PL	3.08m ²
TOTAL	37.99m²
BALCON	4.61m ²

PLAN DE REPERAGE



A209
T2 - 37.99m²



Echelle 1/50ème

KABANE

LES BUREAUX DU SILLON
8, avenue des Thébaudières
26ème Etage - Aile B
44800 SAINT-HERBLAIN
Tél : 02.85.52.84.93
contact@kabane-architecture.fr